

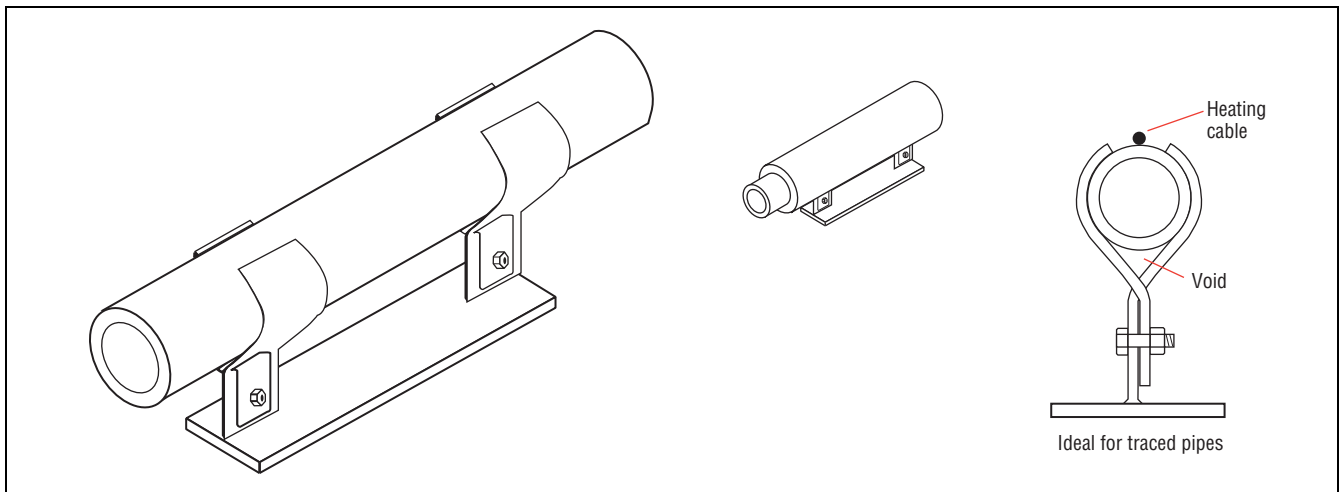
Clamp-on pipe shoe

The Interlock™ clamp-on pipe shoe is a patented pipe support designed to eliminate field welding requirements for pipe supports, while overcoming the many disadvantages associated with the clamp-on pipe shoes that are available on the market today.

The Interlock pipe shoe is more cost effective when compared to either conventional clamp-on pipe supports or field welded pipe supports and can be used on all pipe applications including bare pipe, painted pipe, insulated pipe, or heat-traced pipe.

Interlock pipe shoes may reduce the amount of heat loss at supports to a negligible level.

The Interlock pipe shoe is designed for use on nominal pipe sizes ranging from 1-in (25.4 mm) through 8-in (203.2 mm), and is available in heights of 3-in (76.2 mm), 4-in (101.6 mm), and 6-in (152.4 mm) to accommodate varying thicknesses of pipe insulation. The Interlock shoe is made from hot dip galvanized A-36 carbon steel for corrosion protection.



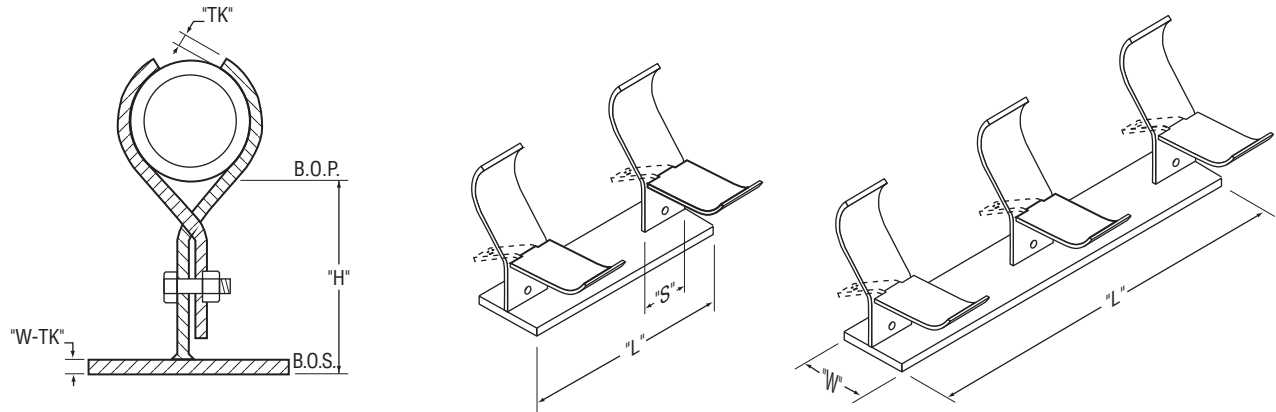
Benefits

Reduced heat loss	The clamps of a conventional clamp-on pipe shoe extend radially outward from the pipe, increasing the labor and reducing the integrity of insulation local to the support. Interlock, with its unique cross section, offers reduced installation time and increased insulation integrity.
Increased pipe rack utilization	Because of its minimal profile, the Interlock shoe allows for better rack utilization by reducing the clearance required to accommodate the extended clamps of conventional shoes.
No pipe corrosion	Corrosion has historically been a major problem with conventional clamp-on shoes. Protective coatings tend to deteriorate between the support and the pipe bottom because of moisture or other trapped contaminants. Because the Interlock shoe does not have a saddle that will collect moisture or other corrosive media, the corrosion problem associated with conventional clamp-on pipe supports is not an issue.
Traced pipes	The Interlock shoe is the only clamp-on shoe that allows for direct contact between the heat tracing and the pipe. Heat tracing can be installed between the clamp tongs, allowing for maximum heat transfer. The minimal profile of the Interlock shoe reduces heat loss significantly more than other clamp-on shoes

Operating Temperatures

Temperature	The standard Interlock shoe (made of A-36 carbon steel) can be used in services from -20°F (-28.9°C) to 400°F (204.4°C).
-------------	--

Dimensions



Materials of Construction

Material	Interlock shoe is made out of A-36 carbon steel, but is also available in other materials of construction for special applications.
Base	Depending on the application, includes either two or three support tongs welded to the Interlock shoe. These support tongs have a lever gap stamped in their base through which a mating tong is inserted. When the mating tong is bolted to the support tong, the pipe ends of the tong are drawn together, gripping the pipe.
Assembly	The entire assembly is galvanized (6 mil thick) for corrosion protection.

Product Specifications

Pipe size inch (mm)	L inch (mm)	H inch (mm)	W inch (mm)	S inch (mm)	W-TK inch (mm)	TK inch (mm)	Plate	Bolt/Nut
1 (25.4), 1.5 (38.1), 2 (50.8)	12 (304.8), 18 (457.2)	3 (76.2), 4 (101.6)	3 (76.2)	3 (76.2)	3/8 (9.525)	3/16 (4.762)	A-36	1/2" (12.7 mm)
	12 (304.8), 18 (457.2)	6 (152.4)	4 (101.6)	3 (76.2)	3/8 (9.525)	3/16 (4.762)	C.S.	A449 w/2 H nut
3 (76.2), 4 (101.6)	12 (304.8), 18 (457.2)	3 (76.2), 4 (101.6)	3 (76.2)	3 (76.2)	3/8 (9.525)	1/4 (6.35)	A-36	1/2" (12.7 mm)
	12 (304.8), 18 (457.2)	6 (152.4)	6 (152.4)	3 (76.2)	3/8 (9.525)	1/4 (6.35)	C.S.	A449 w/2 H nut
6 (152.4)	12 (304.8), 18 (457.2)	3 (76.2), 4 (101.6)	4 (101.6)	4 (101.6)	3/8 (9.525)	1/4 (6.35)	A-36	1/2" (12.7 mm)
	12 (304.8), 18 (457.2)	6 (152.4)	6 (152.4)	4 (101.6)	3/8 (9.525)	1/4 (6.35)	C.S.	A449 w/2 H nut
8 (203.2)	12 (304.8), 18 (457.2)	3 (76.2), 4 (101.6)	4 (101.6)	4 (101.6)	3/8 (9.525)	5/16 (7.938)	A-36	1/2" (12.7 mm)
	12 (304.8), 18 (457.2)	6 (152.4)	6 (152.4)	4 (101.6)	3/8 (9.525)	5/16 (7.938)	C.S.	A449 w/2 H nut

Interlock Ordering Matrix: A/B/C/D

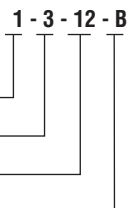
Example

A = Pipe size – 1" (25.4 mm), 1.5" (38.1 mm), 2" (50.8 mm), 3" (76.2 mm), 4" (101.6 mm), 6" (152.4 mm), 8" (203.2 mm)

B = Shoe height – 3" (76.2 mm), 4" (101.6 mm), 6" (152.4 mm)

C = Shoe length – (12" (304.8 mm), 18" (457.2 mm)

D = Isolation/heat trace thermal boot – (n/a, B)



Ordering Information**2 Clamp – 12 inch (304.8 mm) Long Support**

Nominal pipe size – inch (mm)	Height – inch (mm)	Catalog number	Weight – lbs (kg)
1 (25.4)	3 (76.2)	1-3-12	6.50 (2.948)
1 (25.4)	4 (101.6)	1-4-12	7.00 (3.175)
1 (25.4)	6 (152.4)	1-6-12	9.75 (4.423)
1.5 (38.1)	3 (76.2)	1.5-3-12	7.00 (3.175)
1.5 (38.1)	4 (101.6)	1.5-4-12	7.50 (3.402)
1.5 (38.1)	6 (152.4)	1.5-6-12	10.50 (4.763)
2 (50.8)	3 (76.2)	2-3-12	7.25 (3.289)
2 (50.8)	4 (101.6)	2-4-12	7.75 (3.515)
2 (50.8)	6 (152.4)	2-6-12	10.75 (4.876)
3 (76.2)	3 (76.2)	3-3-12	8.25 (3.742)
3 (76.2)	4 (101.6)	3-4-12	8.50 (3.856)
3 (76.2)	6 (152.4)	3-6-12	13.25 (6.01)
4 (101.6)	3 (76.2)	4-3-12	11.25 (5.103)
4 (101.6)	4 (101.6)	4-4-12	11.50 (5.216)
4 (101.6)	6 (152.4)	4-6-12	17.25 (7.824)
6 (152.4)	3 (76.2)	6-3-12	16.75 (7.598)
6 (152.4)	4 (101.6)	6-4-12	17.00 (7.711)
6 (152.4)	6 (152.4)	6-6-12	22.50 (10.21)
8 (203.2)	3 (76.2)	8-3-12	22.00 (9.979)
8 (203.2)	4 (101.6)	8-4-12	23.50 (10.66)
8 (203.2)	6 (152.4)	8-6-12	29.50 (13.38)
Isolation insert for 12"		-B	—

3 Clamp – 18 inch (457.2 mm) Long Support

Nominal pipe size – inch (mm)	Height – inch (mm)	Catalog number	Weight – lbs (kg)
1 (25.4)	3 (76.2)	1-3-18	9.75 (4.423)
1 (25.4)	4 (101.6)	1-4-18	10.50 (4.763)
1 (25.4)	6 (152.4)	1-6-18	14.75 (6.69)
1.5 (38.1)	3 (76.2)	1.5-3-18	10.50 (4.763)
1.5 (38.1)	4 (101.6)	1.5-4-18	11.25 (5.103)
1.5 (38.1)	6 (152.4)	1.5-6-18	15.75 (7.144)
2 (50.8)	3 (76.2)	2-3-18	10.88 (4.935)
2 (50.8)	4 (101.6)	2-4-18	11.75 (5.33)
2 (50.8)	6 (152.4)	2-6-18	16.00 (7.257)
3 (76.2)	3 (76.2)	3-3-18	12.50 (5.67)
3 (76.2)	4 (101.6)	3-4-18	12.75 (5.783)
3 (76.2)	6 (152.4)	3-6-18	20.00 (9.072)
4 (101.6)	3 (76.2)	4-3-18	17.00 (7.711)
4 (101.6)	4 (101.6)	4-4-18	17.25 (7.824)
4 (101.6)	6 (152.4)	4-6-18	26.00 (11.79)
6 (152.4)	3 (76.2)	6-3-18	25.00 (11.34)
6 (152.4)	4 (101.6)	6-4-18	25.50 (11.57)
6 (152.4)	6 (152.4)	6-6-18	33.75 (15.31)
8 (203.2)	3 (76.2)	8-3-18	33.00 (14.97)
8 (203.2)	4 (101.6)	8-4-18	35.25 (15.99)
8 (203.2)	6 (152.4)	8-6-18	44.25 (20.07)
Isolation insert for 18" (457.2 mm)		-B	—

**Worldwide Headquarters
Tyco Thermal Controls**

7433 Harwin Drive
Houston, TX 77036
USA
Tel: 800-545-6258
Tel: 650-216-1526
Fax: 800-527-5703
Fax: 650-474-7711
info@tycothermal.com
www.tycothermal.com

**Canada
Tyco Thermal Controls**

250 West St.
Trenton, Ontario
Canada K8V 5S2
Tel: 800-545-6258
Fax: 800-527-5703

Europe, Middle East, Africa (EMEA)

Tyco Thermal Controls
Romeinse Straat 14
3001 Leuven
België / Belgique
Tel: +32 16 213 511
Fax: +32 16 213 603

**Latin America
Tyco Thermal Controls**

7433 Harwin Drive
Houston, TX 77036
United States
Tel: 713-868-4800
Tel: 713-735-8645
Fax: 713-868-2333

**Asia Pacific
Tyco Thermal Controls**

20F, Innovation Building,
1009 Yi Shan Rd,
Shanghai 200233,
P.R.China
Tel: +86 21 2412 1688
Fax: +86 21 5426 2937 / 5426 3167

Tyco, Alliance Integrated Systems, AMC, AutoMatrix, AutoSol, BTV, CapaciSense, Chemelex, DHSX, DigiTrace, DigiTrace logo, DigiTrace Supervisor, Duoterm, ElectroMelt, EM2XR, FHSM, FHSC, FlexFit, FlexiClic, Flowguard, FreezeTrace, FreezGard, Frostex, Flostex Plus, Frostguard, FroStop, FSE, Gardian, HAK, Handvise, HBTv, HCCL, HotCap, HQTv, HTPG, HTPi, HWAT, HXTv, IceStop, Interlock, Isocable, Isodrum, Isoheat, Isomantle, Isopad, Isopad Frostguard, Isopad logo, Isopanel, Isotape, Isotherm, JBM, JBS, K-Flex, K-Flex logo, KHE, KHH, KHL, KHP, KTV, Labsafe, LBTv, LHC, LHFV, LHRV, Metabond, Mini WinterGard, Miser WinterGard, MoniTrace, Multi-plus, NGC, PetroTrace, PLI, PolyMatrix, Pyro CiC, PyroFLX, Pyromaster, Pyropak, Pyrosil, PyroSizer, Pyrotenax, Pyrotenax Designer, Pyrotenax logo, QTVR, QuickNet, QuickNet logo, QuickStat, QuickTerm, RayClic, RaySol, RayStat, Retro WinterGard, RHS, RHSC, RHSM, RMM2, SBF, SBV, SC, SHC, Sheathmaster, ShowerGuard, ShrinkCap, ShrinkSeal, ShrinkSystems, ShrinkTool, ShrinkTube, SLBTv, SnoCalc, SnoCalc logo, STS, System 500, System 1850, System 1850-SE, System 2000, System 2200, T2, T2 logo, T2Blue, T2QuickNet, T2Red, T2Reflecta, TankCalc Plus, TempBus, Thermoheat, ThermoLimit, ThermoLine, Touch, Trac-Loc, TraceCalc, TraceCalc Net, TraceCalc Net logo, TraceCalc Pro logo, TraceGard 277, TraceMaster, Tracer, Tracer logo, TracerLynx, TracerLynx logo, TraceStat, TraceTek, TraceTek logo, TruckPak, VLBTv, VLKTV, VPL, We manage the heat you need, WinterGard, WinterGard logo, WinterGard Plus, WinterGard Wet, XL-Trace, XTV and Zero EMI are registered and/or unregistered trademarks of Tyco Thermal Controls LLC or its affiliates.

All other trademarks are the property of their respective owners.

tyco
Thermal Controls

Important: All information, including illustrations, is believed to be reliable. Users, however, should independently evaluate the suitability of each product for their particular application. Tyco Thermal Controls makes no warranties as to the accuracy or completeness of the information, and disclaims any liability regarding its use. Tyco Thermal Controls' only obligations are those in the Tyco Thermal Controls Standard Terms and Conditions of Sale for this product, and in no case will Tyco Thermal Controls or its distributors be liable for any incidental, indirect, or consequential damages arising from the sale, resale, use, or misuse of the product. Specifications are subject to change without notice. In addition, Tyco Thermal Controls reserves the right to make changes—without notification to Buyer—to processing or materials that do not affect compliance with any applicable specification.